



# VALLEY VIEW UNIVERSITY

## SCHOOL OF NURSING AND MIDWIFERY

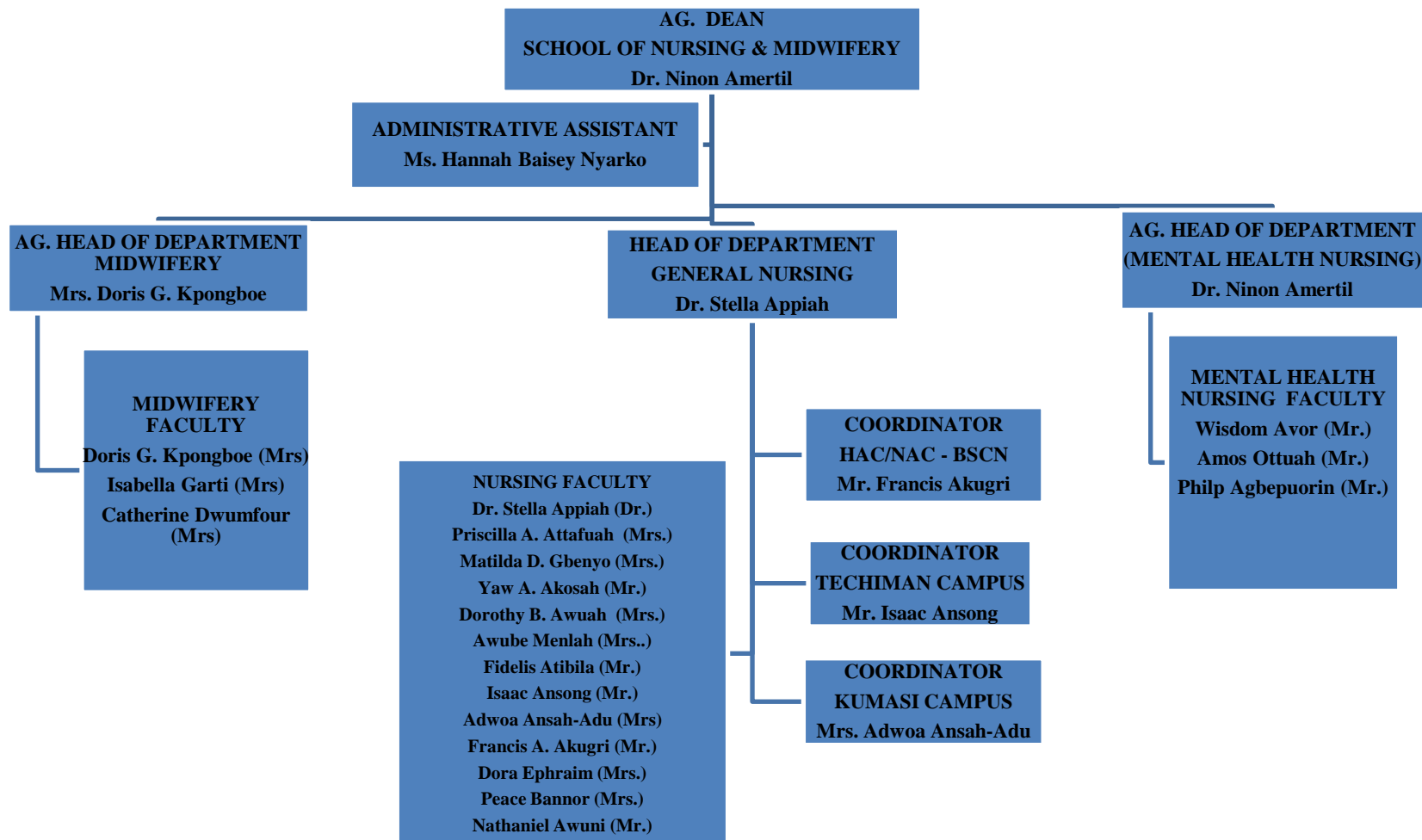
STUDENT HANDBOOK  
2018 – 2019

POLICIES AND PROCEDURES

## TABLE OF CONTENTS

TABLE OF CONTENTS .....	1
ORGANIZATIONAL CHART FOR THE SCHOOL OF NURSING AND MIDWIFERY .....	3
LETTER FROM THE DEAN .....	5
VALLEY VIEW UNIVERSITY STUDENT HANDBOOK .....	6
HISTORY OF VALLEY VIEW UNIVERSITY .....	6
MISSION STATEMENT .....	6
CORE VALUES .....	6
EDUCATIONAL PHILOSOPHY .....	6
HISTORY OF VALLEY VIEW UNIVERSITY SCHOOL OF NURSING AND MIDWIFERY .....	7
PHILOSOPHY .....	7
PROGRAM OBJECTIVES .....	8
GENERAL INFORMATION .....	9
STUDENTS' ADMISSION, PROGRESSION AND GRADUATION .....	9
LICENSURE REQUIREMENTS .....	14
ACADEMIC INFORMATION/CURRICULUM .....	15
POLICIES REGARDING ACADEMIC ACHIEVEMENT & SUMMER COURSE REGISTRATION AUTHORIZATION .....	36
ACADEMIC ADVISEMENT .....	37
ACADEMIC PROBATION .....	37
WITHDRAWAL FROM NURSING/MIDWIFERY COURSES .....	37
WITHDRAWAL FROM THE SCHOOL .....	37
DEFERMENT .....	37
POLICIES OF PERSONAL, PROFESSIONAL AND ETHICAL CONDUCT .....	38
ABSENCE/TARDINESS TO CLASSES OR/AND PRACTICUM .....	38
GRIEVANCE PROCEDURE AND POLICY ON GRADING .....	39
CLINICAL INFORMATION .....	39
RESPONSIBILITIES OF THE STUDENT NURSE/MIDWIFE .....	40
ACADEMIC DISHONESTY .....	41
UNSAFE PRACTICE .....	41
UNIFORM/DRESS CODE .....	41

COUNSELING .....	43
NON-DISCRIMINATORY POLICY .....	43
GENDER POLICY .....	43
EQUAL OPPORTUNITY .....	44
SEXUAL HARASSMENT .....	44
CAREER OPPORTUNITIES .....	44
HEALTH INSURANCE REQUIREMENT .....	45
STUDENTS' ASSOCIATION .....	46
CLUBS AND SPORTS .....	46
TECHNICAL PERFORMANCE STANDARDS.....	47
STUDENT AGREEMENT FORM.....	49



**ORGANIZATIONAL CHART FOR THE SCHOOL OF NURSING AND MIDWIFERY**

## **LETTER FROM THE DEAN**

Dear Students,

On behalf of the faculty and staff of Valley View University, School of Nursing and Midwifery, I am pleased to welcome all new and continuing students. The University provides the right academic and scholastic environment filled with lifelong opportunities for your professional and personal growth.

As nursing and midwifery students you are part of one of largest health professions in the world. We expect your experience at Valley View University to endow you with a dynamic education that will prepare you to be change agents in a rapidly changing healthcare system.

Please take time to familiarize yourself with the policies and procedures found in the Student Handbook. It contains information relevant to your roles and responsibilities for Valley View University and the School of Nursing and Midwifery. The handbook is subject to change and the School reserves the right to make changes at any time without advance notice.

My very best wishes to all of you for a successful academic year,

**Ninon Amertil, Ph.D., RN**  
**Ag. Dean, School of Nursing and Midwifery**  
**Valley View University**

## **VALLEY VIEW UNIVERSITY STUDENT HANDBOOK**

Valley View University provides every registered student with a copy of the Student Handbook. It is designed to inform students concerning rules and regulations governing them during their stay in the University. It is therefore imperative that every student gets a copy and familiarize him/herself with its contents. It should be studied with care. Individuals who are not interested in supporting the ideals and high moral standards of the University should not enroll.

## **HISTORY OF VALLEY VIEW UNIVERSITY**

Valley View University (VUU) was established in 1979 by the West African Union Mission of Seventh-day Adventists (now Ghana Union Conference). In 1997 it was absorbed into the Adventist University system operated by the Africa-Indian Ocean Division (WAD) of Seventh-day Adventist with headquarters in Abidjan, Cote d'Ivoire. The Ghana Union Conference of Seventh-day Adventists (organized in 2000) serves as the local manager of the University.

The University was initially called the Adventist Missionary College and was located at Bekwai-Ashanti. It was transferred to Adenta near Accra in 1983 where it operated in rented facilities until it was relocated to its present site near Oyibi (Mile 19 on the Accra-Dodowa Road) In 1989 and was renamed Valley View College.

The Adventist Accrediting Association (AAA) has, since 1983, been evaluating and reviewing the accreditation status of the institution. In 1995, the university was affiliated to Griggs University in Silver Springs, Maryland, USA. This allowed the university to offer four year bachelor's degrees in Theology and Religious Studies. The National Accreditation Board (Ghana) granted it national accreditation in 1995 thus allowing the university to award her own degrees. Thus, Valley View University became the first private institution in Ghana to be granted national accreditation.

The university serves students from all over the world. It admits qualified students regardless of their religious background, provided such students accept the Christian principles and lifestyle which forms the basis for the university's operations.

## **MISSION STATEMENT**

"Valley View University, a Seventh-day Adventist institution, emphasizes academic, spiritual, vocational, and technological excellence for service to God and humanity."

## **CORE VALUES**

Valley View University seeks to pass on a passion for excellence, integrity and service.

- **Excellence-** The commitment to attain higher standards and expectations.
- **Integrity-** A life that matches convictions with actions. Integrity encompasses honesty, authenticity and trustworthiness.
- **Service-** The willingness to serve God and humanity in selfless manner.

## **EDUCATIONAL PHILOSOPHY**

Valley View University is committed to the spiritual, physical, mental, and social development of qualified students who seek both practical and intellectual preparation for a life of service to their communities.

The Christian writer, Ellen G. White, counseled that:

*“Instead of educated weaklings, institutions of learning may send forth men strong to think and to act, men who are masters and not slaves of circumstances, men who possess breadth of mind, clearness of thought, and the courage of their convictions” (Education, p. 18).*

Following this counsel, VVU seeks to encourage each student to develop desirable characteristics such as integrity, initiative, perseverance, adaptability, and trust in God.

The educational philosophy of Valley View University embraces the principle that every individual has the responsibility of serving others.

For this reason, the University seeks to expand the graduate’s options for employment by providing opportunities for students to develop vocational skills which can help them to be of service in a wide field of human endeavor.

Furthermore, the University does not measure a graduate’s success in terms of material gain only, but also in terms of one’s capacity to find a meaningful avenue of service.

## **HISTORY OF VALLEY VIEW UNIVERSITY SCHOOL OF NURSING AND MIDWIFERY**

In 2007 Valley View University (VVU) Department of Nursing was established, with the purpose of elevating the standard of nursing education and practice in Ghana and the West African region. As a Seventh-day Adventist institution students will be encouraged to uphold Christian principles which will enhance their practice and assist them to become caring and compassionate practitioners. In 2018, the Department became a School following the addition of two new accredited baccalaureate programmes, Midwifery and Mental Health Nursing

## **PHILOSOPHY**

The philosophy of the Bachelor of Science degree in Nursing and Midwifery at Valley View University is in accordance with the basic beliefs of the Seventh-day Adventist church and the mission of Valley View University concerning health, education and the wholistic nature of man. The interrelated concepts of this philosophy include GOD, MAN, HEALTH, ENVIRONMENT, NURSING and NURSING EDUCATION.

GOD as the creator and sustainer of the universe is a supreme being who created man with purpose, and to be a reflection of His character.

MAN (person) is the client who the nurse/midwife is serving, this may be anyone who is in need of nursing/medical services, and this includes but is not limited to, well, ill and/or injured individuals, families and/or communities. Man (person) was created in the image of God but sin led to separation between God and humanity and a weakening of human’s physical, psychosocial, intellectual and spiritual capacities. Man has the freedom to make choices about his/her health, but he/she is eventually accountable for these choices and its concurrent consequences. Thus humans no longer reflect the image and character of God.

HEALTH or high level wellness is a relative concept and is achieved when man is obedient to the physical, mental, social and spiritual laws as outlined in the Ten Commandments. Individuals have basic rights to enjoy good health which includes primary, secondary and tertiary measures. The wellness-illness continuum is dynamic indicating that a person’s health status can move from one level to another, the goal being an optimum level of mental, physical, social and spiritual

health. Illness is considered as a crisis in the life of an individual and is a highly motivating or stimulating situation or period of development which activates man's adaptive responses to a maximum or optimum degree in order to meet his changing needs.

ENVIRONMENT consists of all that affects an individual. This includes a person's physical surroundings, genetic, cultural and ethnic background as well as family, groups, organizations, and community relationships. These aspects of environment interact and influence the growth and development of the person as well as the person's illness potential and his unique response to illness. In a broader sense environment also refers to the society to which an individual belongs.

NURSING AND MIDWIFERY are applied sciences which utilize knowledge from other disciplines to promote, maintain and restore health and treat human responses to illness throughout the lifespan. They are also a caring, Christ-centered humanitarian social service that is goal directed and interactive in assisting man with the prevention of illness and the restoration of health. The sciences promote interaction in assisting him to achieve death with dignity when necessary. Nursing and midwifery provide individualized care utilizing the nursing process which is a scientific method of providing nursing and midwifery care. The nurse and midwife have the ability to perform his/her professional functions independently and interdependently through critical thinking for the benefit of the client. However the nurses and midwives are accountable for the quality of care they provide.

Nursing and Midwifery education involve the teaching/learning process and technical and professional roles. They are one of the tools necessary to meet the demand of the Nursing and Midwifery in the global healthcare workforce. Learning is a lifelong process and results in a change in behavior. Nursing and Midwifery education involve an integration of cognitive, affective and psychomotor experiences. Nursing and Midwifery education will equip graduates with the skills to function both as healthcare providers and leaders within the healthcare system in Ghana and the world. The role of the teacher is to create a climate in which the student can develop his/her potential to the highest level and in so doing can develop a self concept of personal adequacy and professional competence. The teacher also sets goals, defines theoretical content, selects and organizes learning opportunities, provides guidance to students and serves as a role model. Therefore Valley View University is proposing the establishment of pathways leading to the Bachelor of Science Degrees in General Nursing, Midwifery and Mental Health Nursing. Students are seen as responsible adult learners who will be able to provide safe, nurturing care in a variety of settings.

## **PROGRAM OBJECTIVES**

The goal of the School of Nursing and Midwifery is to prepare competent nurses and midwives who are committed to compassionate Christian service. Upon completion of the Bachelor of Science degree the graduate will be able to:

- Think critically and utilize the nursing processes to assist clients to achieve and maintain optimal wellness.
- Synthesize knowledge from the sciences, liberal arts and nursing to provide appropriate and effective client care in a variety of settings.
- Evaluate, participate in and utilize research knowledge in nursing and midwifery practice
- Demonstrate skills necessary to implement primary, secondary and tertiary levels of health intervention in various cultural settings.



- Utilize principles of teaching and learning to promote healthy lifestyles through client education which addresses health promotion, risk reduction, disease prevention and health maintenance.
- Design professional health education programs to address the multiple health care needs of residents of Ghana particularly rural communities.
- Use managerial skills effectively to allocate resources, manage personnel and to evaluate nursing care outcomes.
- Contribute to society and the nursing/midwifery profession by demonstrating continued growth in personal and professional competence and Christian values.
- To enable students to apply a wholistic approach to nursing practice
- To perform beginning leadership and managerial nursing/midwifery roles.
- To demonstrate the ability to accept responsibility for nursing/midwifery actions.
- To exercise accountability in decision making and self awareness.
- To demonstrate ability to communicate effectively and work with other members of the health care team.

## **GENERAL INFORMATION**

The School of Nursing and Midwifery is approved by the National Accreditation Board (NAB) of Ghana and the Nursing and Midwifery Council (NMC) of Ghana. The school offers a four (4) year Bachelor of Science in Nursing and Midwifery.

The Nursing and Midwifery programs prepare graduates for the licensing examination administered by the Nursing and Midwifery Council of Ghana. All clinical experiences will be conducted off campus at selected clinical agencies/settings. Practicum sessions are scheduled for all three shifts: Morning, Afternoon and Night shifts. No practicum is allowed between the hours of 2.00pm on Friday and 8.00pm on Saturday.

There is a clinical attachment fee for each nursing practicum. Transportation and accommodations will be organized by the School of Nursing and Midwifery.

## **STUDENTS' ADMISSION, PROGRESSION AND GRADUATION**

### **Minimum Requirements for Entry into First Degree Program:**

- a. Age: 18 – 35 years.
- b. Senior Secondary School Certificate Examination (**SSSCE**) and West African Senior Secondary Certificate Exam (**WASSCE**) Candidates

The general requirements for admission of WASSCE and SSSCE candidates to the degree in Nursing and Midwifery Programs are three (3) credit passes in three (3) core subjects and three (3) credit passes in three relevant elective subjects.

- i. SSSCE Candidates: Credit passes (A-D) in Six (6) subjects comprising three (3) core subjects (Mathematics, Science, and English) plus three(3) relevant electives.
- ii. WASSCE Candidates: Credit passes (**at least A1 – C6**) in Six (6) subjects comprising three (3) core subjects (Mathematics, Science, and English) plus three(3) relevant electives.

Foreign students may be admitted on the basis of qualification from the home country for which the West African Examination Council shall determine equivalences. Evidence of proficiency in English language for non english speaking countries is required.

- c. **Diploma holders** from recognized Institutions will be considered on individual basis.
- d. **Applicants with Health Assistant Clinical (HAC) and Nurse Assistant Clinical (NAC)** will be considered after successful completion of an NMC recognized Access Course.
- e. The first year of the program is considered primarily pre-clinical. Nursing students are only admitted in August and since most courses are sequential they are usually offered once a year.  
It should be noted that these requirements satisfy both professional and academic entries.

### **Admission Requirements to the Generic Pathway**

- a. An interview with the School of Nursing and Midwifery admissions committee. The admissions committee seeks to admit individuals with a high degree of personal integrity, dependability, self-discipline, intellectual strength, physical stamina, very sound mind and who are caring, compassionate, and thoughtful toward others.
- b. Admission by the University
- c. A completed health history and physical examination from the health facility designated/approved by the School of Nursing and Midwifery.
- d. Obtain application and pay fee for indexing with the Nursing and Midwifery Council of Ghana during the first semester. This also requires two passport size photos.
- e. Students wishing to change from another program to nursing or midwifery should refer to the 'Change of Academic Program' policy in the University Bulletin.
- f. Students who wish to transfer to the nursing/midwifery program should go through the admission process as outlined in the academic bulletin. (*See Valley View University Academic Bulletin 2013 – 2018 p. 22-30*).

### **Admission Requirements for the BScN Program through Access Course (HAC/NAC)**

- a. An interview with the School of Nursing and Midwifery admissions committee. The admissions committee seeks to admit individuals with a high degree of personal integrity, dependability, self-discipline, intellectual strength, physical stamina, very sound mind and who are caring, compassionate, and thoughtful toward others.
- b. Admission by the University.
- c. A completed health history and physical examination.
- d. Obtain application and pay fee for indexing with the Nursing and Midwifery Council of Ghana during the first semester. This also requires two passport size photos.
- e. Must be registered with the Nursing and Midwifery Council of Ghana as Health Assistant Clinical (HAC) or Nurse Assistant Clinical (NAC).
- f. Must have a valid Auxiliary Identification Number (AIN).
- g. Must work for a minimum of three (3) years in a health care facility as a HAC/NAC.

### **Admission Requirements for Diploma to BScN Pathway**

- a. A formal application and 3 letters of recommendation to the office of admissions and records.

- b. Copy of current Licensure with the Nursing and Midwifery Council of Ghana including a valid PIN.
- c. A copy of official transcripts to the office of admissions and records
- d. Completion of at least 2 years of nursing practice
- e. An interview with the admissions committee of the School of Nursing and Midwifery.
- f. Complete a medical history and physical examination from the health facility designated/approved by the School of Nursing and Midwifery.

### **Admission Requirements for Registered Mental Health Nursing (RMN) to BScN Pathway**

**Diploma holders** from recognized Institutions will be considered for on individual basis.

- a. Applicants with **Registered Mental Health Nursing (RMN) certificate** and a minimum of two years of RMH practice would also be considered for a two year BSc. Mental Health Course.
- b. A formal application, a copy of official transcripts and 3 letters of recommendation should be sent to the office of admissions and records of VVU.
- c. Copy of current License with the Nursing and Midwifery Council of Ghana including a valid PIN.
- d. Completion of at least 2 years of nursing practice
- e. An interview with the admissions committee of the School of Nursing and Midwifery.
- f. Complete a medical history and physical examination from the health facility designated/approved by the School of Nursing and Midwifery.

### **Admission Requirements for Registered Midwifery (RM)/State Registered Midwifery to BScN Pathway**

**Diploma holders** from recognized Institutions will be considered for on individual basis.

- a. Applicants with **Registered Midwifery (RM) certificate/State Registered Midwifery (SRM)** would also be considered for a two/three-year BSc. Midwifery Course.
- b. A formal application, a copy of official transcripts and 3 letters of recommendation should be sent to the office of admissions and records of VVU.

- c. Copy of current License with the Nursing and Midwifery Council of Ghana including a valid PIN.
- d. Completion of at least 2 years of midwifery practice
- e. An interview with the admissions committee of the School of Nursing and Midwifery.
- f. Complete a medical history and physical examination from the health facility designated/approved by the School of Nursing and Midwifery.

### **Indexing with Nursing and Midwifery Council of Ghana**

All pre-licensure students must be indexed with the Nursing and Midwifery Council of Ghana during the first semester after admission to VVU School of Nursing and Midwifery. This is necessary in order to be eligible to write the licensure examination. Documents needed include original birth certificate, WASSCE or SSSCE results and two passport size photos. If an applicant's name on the result slips does not correspond with name appearing on the biometric birth certificate, He/She must provide a legal document from the Register General confirming his/her identity. All fees for indexing and licensing examinations will be charged separately by the Nursing and Midwifery Council.

### **Progression for all Nursing and Midwifery students**

- a. All students must earn a grade of C (50-55) or better in all courses including Cores, Cognates and General Education. There will be no rounding of grades. At the end of the semester, final score tabulation below 50 is considered failure in the course, e.g. **49.9** does not satisfy a passing grade.
- b. Students must obtain a passing grade in both theory and practical components of nursing and midwifery courses. A failing grade in either of the two components will result in repeating the course and /or dismissal from the program.
- c. There will be **NO** re-sit examinations for unsatisfactory score in nursing courses. Students who achieve a score below C (50-55) in any nursing/ midwifery course must repeat that course.
- d. For all nursing and midwifery levels only **two** cognates or nursing/midwifery courses may be repeated, a third course failure will result in the application of "Communicating the Consequences of Failing Grades" rules (*See Valley View University Academic Bulletin 2013 – 2018 p. 58*).
- e. Advancement to each succeeding semester is dependent upon the successful completion of all class work and practicum shown in the preceding semester.
- f. Courses taken more than two years prior will not be accepted for continuing in the program. A student must repeat those courses and be prepared to validate continuity of knowledge.
- g. If a student defers from the nursing and midwifery program for more than one year he/she

- must repeat all the nursing courses.
- h. Practical for nursing and midwifery courses will be offered off campus. The School may assist students to locate affordable accommodation. Transportation will be provided by the university. Students are expected to conduct themselves professionally in the clinical sites according to the policies of VVU.
- i. Courses with practicum are designed to enable students to develop competencies in their area of practice during their supervised clinical experience.
- j. Practicing **Registered Nurses and Midwives** are exempted from intrasemester practicum, since they are already practicing in clinical settings. However, they will participate in long vacation practicum.

## **Requirements for Graduation**

### **Bachelor of Science in Nursing**

- a. A candidate for the Bachelor of Science Degree in Nursing will have completed a minimum of **166** (credits with a Cumulative GPA of 2.0 or above.
- b. Meet all graduation requirements as stated in the University Bulletin such as completion of all general education / liberal arts courses required by the University.
- c. Submit a research project and a patient care study of between 5,000 and 10,000 words.

### **Bachelor of Science Mental Health Nursing**

- a. A candidate for the Bachelor of Science Degree in Nursing will have completed a minimum of **166** (credits with a Cumulative GPA of 2.0 or above.
- b. Meet all graduation requirements as stated in the University Bulletin such as completion of all general education / liberal arts courses required by the University.
- c. Submit a research project and a patient care study of between 5,000 and 10,000 words

### **Bachelor of Science in Midwifery**

- a. A candidate for the Bachelor of Science Degree in Nursing will have completed a minimum of **166** (credits with a Cumulative GPA of 2.0 or above.
- b. Meet all graduation requirements as stated in the University Bulletin such as completion of all general education / liberal arts courses required by the University.
- c. Submit a research project and a patient care study of between 5,000 and 10,000 words

### **Requirements for Graduation (HAC/NAC – BScN Pathway)**

- a. A candidate for the Bachelor of Science Degree in Nursing will have completed a minimum of **145** credits with a Cumulative GPA of 2.0 or above.
- b. Meet all graduation requirements as stated in the University Bulletin such as completion of all general education / liberal arts courses required by the University.
- c. Submit a research project and a patient care study of between 5,000 and 10,000 words.

### **Requirements for Graduation (RGN – BScN Pathway)**

- a. A candidate for the Bachelor of Science Degree in Nursing will have completed a minimum of **80** credits with a Cumulative GPA of 2.0 or above.
- b. Meet all graduation requirements as stated in the University Bulletin such as completion of all general education / liberal arts courses required by the University.
- c. Submit a research project and a patient care study of between 5,000 and 10,000 words.

**Requirements for Graduation (RMN – BScN Pathway)**

- a. A candidate for the Bachelor of Science Degree in Nursing will have completed a minimum of **80** credits with a Cumulative GPA of 2.0 or above.
- b. Meet all graduation requirements as stated in the University Bulletin such as completion of all general education / liberal arts courses required by the University.
- c. Submit a research project and a patient care study of between 5,000 and 10,000 words.

**Requirements for Graduation (RM/SRM) – BSc Pathway)**

- a. A candidate for the Bachelor of Science Degree in Nursing will have completed a minimum of **80** credits with a Cumulative GPA of 2.0 or above.
- b. Meet all graduation requirements as stated in the University Bulletin such as completion of all general education / liberal arts courses required by the University.
- c. Submit a research project and a patient care study of between 5,000 and 10,000 words.

**LICENSURE REQUIREMENTS**

After successful completion of the pre-licensure programs, students will be eligible to sit for the Nursing and Midwifery Council Licensing Examinations.

Level 400 students who plan to graduate in July or December must pay additional fees for course/practicum revision and NMC licensing examinations including all expenses to be incurred for the latter requirement.

**ACADEMIC INFORMATION/CURRICULUM**  
**SEMESTER- BY- SEMESTER SCHEDULE OF COURSES – STRUCTURE OF THE**  
**PROGRAM**

BSc. NURSING PROGRAM COURSE OFFERING TOTAL CREDITS 166 (THEORY – 135/PRACTICUM – 31)										
LEVEL 100										
SEMESTER I						SEMESTER II				
CODE	COURSE	T	P	C		CODE	COURSE	T	P	C
ENGL 111	Language and Writing Skills I	2	-	2		ENGL	Language and Writing Skills II	2	-	2
CHEM 121	Chemistry for Health Sciences	3	-	3		RNUR 102	Foundations of Nursing	3	-	3
MATH 120	General Mathematics	3	-	3		BIOL 112	Anatomy & Physiology II	4	0	4
GNED 125	Study Skills	0	-	0		RNUR 122	Professional Adjustment in Nursing	3	-	3
RNUR 101	Nursing and Midwifery Informatics	2	1	3		RNUR 132	Health Promotion and Environmental health	3	1	4
BIOL 111	Anatomy and Physiology I	4	-	4		SOCI 142	Introductory Sociology	2	-	2
CMME 115	Introduction to Communication Skills	2	-	2		RNUR 152	Foundations of Nursing Practicum	-	2	2
RELB 163	Life and Teachings of Jesus	3	-	3						
TOTAL CREDITS		19	1	20		TOTAL CREDITS		17	3	20
					RNUR 100 Long Vacation Practicum I		-	3	3	
LEVEL 200										
SEMESTER I						SEMESTER II				
CODE	COURSE	T	P	C		CODE	COURSE	T	P	C
RNUR 201	Principles of Pharmacology I	2	-	2		STAT 202	Statistical Methods for Health Sciences	3	-	3
RNUR 211	Family Health Crisis Intervention I	3	-	3		RNUR 212	Principles of Pharmacology II	2	-	2
RNUR 221	Health Assessment	3	-	3		PSYC 222	Human Growth and Development	2	-	2
BIOL 231	Microbiology & Infection Prevention/Control	3	-	3		RNUR 232	Family Health Crisis Intervention II	3	-	3
PEAC 100	Physical Activity	0	0	0		RNUR 252	Advanced Nursing	2	1	3

PSYC 241	Introduction to Psychology	2	-	2		NUTR 204	Nutrition & Dietetics	2	-	2
RNUR 251	Pathophysiology	3	-	3		RELB 251	Principle of Christian Faith	3	-	3
RNUR 261	Family Health Crisis Intervention I Practicum	-	2	2		RNUR 242	Family Health Crisis Intervention II Practicum	-	2	2
AFST 205	Introduction to African Music	1	-	1						
<b>TOTAL CREDITS</b>		<b>17</b>	<b>2</b>	<b>19</b>		<b>TOTAL CREDITS</b>		<b>17</b>	<b>3</b>	<b>20</b>
						RNUR 200 Long Vacation Practicum II		-	3	3



### LEVEL 300

SEMESTER I					SEMESTER II				
CODE	COURSE	T	P	C	CODE	COURSE	T	P	C
RNUR 301	Nursing Research Methods	3	-	3	RNUR 302	Mental Health Nursing	3	-	3
RNUR 311	Family Health Crisis Intervention III	3	-	3	RNUR 382	Maternal and New Born Nursing II	3	-	3
RNUR 321	Community Health Nursing I	3	-	3	RNUR 322	Senior Research Project I	3	-	3
RNUR 331	Pediatric Nursing I	3	-	3	RNUR 332	Pediatric Nursing II	2	1	3
RNUR 381	Maternal and New Born Nursing I	3	-	3	RNUR 342	Community Health Nursing II	3	-	3
RNUR 350	Transcultural Nursing	2	1	3	RELS 306	Biblical Foundations of Ethics	3	-	3
RNUR 361	Family Health Crisis Intervention III Practicum	-	2	2	RNUR 352	Sign Language for Healthcare	1	-	1
RNUR 371	Adolescent Health Nursing	1	-	1	RNUR 362	Community Health Nursing Practicum	-	1	1
					RNUR 372	Mental Health Nursing Practicum	-	1	1
<b>TOTAL</b>		<b>18</b>	<b>3</b>	<b>21</b>	<b>TOTAL</b>		<b>18</b>	<b>3</b>	<b>21</b>
					RNUR 300 Long vacation Practicum III		-	3	3



### LEVEL 400

SEMESTER I				SEMESTER II			
------------	--	--	--	-------------	--	--	--



CODE	COURSE	T	P	C	CODE	COURSE	T	P	C
RNUR 401	Family Health Crisis Intervention IV	3	-	3	RNUR 402	Family Health Crisis Intervention V	2	1	3
RNUR 411	Critical Care Nursing /Emergency & Disaster Management	3	-	3	RNUR 412	Marketing Strategies and Entrepreneurship for Healthcare	3	-	3
RNUR 421	Patient/Family-Centered Care Study	1	-	1	RNUR 422	Nursing Leadership/ Management	2	1	3
RNUR 431	Senior Project II	3	-	3	RNUR 432	Supply Chain Management	2	-	2
FREN 400	French for Healthcare	2	-	2	RNUR 442	Palliative Care/Gerontology Nursing	3	-	3
RNUR 441	Family Health Crisis Intervention IV Practicum	-	2	2	RNUR 452	Family Health Crisis Intervention V Practicum	-	2	2
RNUR 451	Critical Care Nursing /Emergency & Disaster Management Practicum	-	1	1					
RNUR 461	Gynecology	3	-	3					
RELG 451	Bible & Family Dynamics	3	-	3					
TOTAL		18	3	21	TOTAL		12	4	16
RNUR 400 Long vacation Practicum IV(Patient/Family Care Study)		-	2	2					

HAC/NAC - BSc. NURSING PROGRAM COURSE OFFERING									
TOTAL CREDITS 145 (THEORY – 129/PRACTICUM – 16)									
YEAR 1									
SEMESTER I					SEMESTER II				
CODE	COURSE	T	P	C	CODE	COURSE	T	P	C
ENGL 111	Language and Writing Skills I	2	-	2	ENGL 112	Language and Writing Skills II	2	-	2
CHEM 121	Chemistry for Health Sciences	3	-	3	RNUR 102	Foundations of Nursing	3	-	3
MATH 120	General Mathematics	3	-	3	BIOL 112	Anatomy & Physiology II	4	-	4
PSYC 241	Introduction to Psychology	2	-	2	RNUR 122	Professional Adjustment in Nursing	3	-	3
RNUR 101	Nursing and Midwifery Informatics	2	1	3	SOCI 142	Introductory Sociology	2	-	2
BIOL 111	Anatomy and Physiology I	4	-	4	RNUR 132	Health Promotion and Environmental health	3	1	4
RELB 251	Principles of Christian Faith	3	-	3	STAT 202	Statistical Methods for Health Sciences	3	-	3
AFST 205	Introduction to African Music	1	-	1					
TOTAL CREDITS		20	1	21	TOTAL CREDITS		20	1	21
RNUR 152 Foundation of Nursing Practicum		0	2	2	RNUR 100 Long Vacation Practicum I		0	3	3
YEAR 2									
SEMESTER III					SEMESTER IV				
CODE	COURSE	T	P	C	CODE	COURSE	T	P	C
RNUR 251	Pathophysiology	3	-	3	RNUR 212	Principles of Pharmacology II	2	-	2
RNUR 321	Community Health Nursing I	3	-	3	PSYC 222	Human Growth and Development	2	-	2
RNUR 211	Family Health Crisis Intervention I	3	-	3	RNUR 342	Community Health Nursing II	3	-	3
RNUR 301	Nursing Research Methods	3	-	3	RNUR 232	Family Health Crisis Intervention II	3	-	3
BIOL 231	Microbiology & Infection Prevention/ Control	3	-	3	RNUR 302	Mental Health Nursing	3	-	3
RNUR	Adolescent Health Nursing	1	-	1	RELT	Biblical Foundations	3	-	3

371					385	of Ethics				
RNUR 201	Principles of Pharmacology I	2	-	2		RNUR 252	Advanced Nursing	2	1	3
RNUR 221	Health Assessment	3	-	3		NUTR 204	Nutrition & Dietetics	2	-	2
TOTAL CREDITS		21	-	21		TOTAL CREDITS		20	1	21
RNUR 491 Senior Research Project I		3	-	3		RNUR 200 Long Vacation Practicum II		0	3	3
YEAR 3										
SEMESTER V					SEMESTER VI					
CODE	COURSE	T	P	C	CODE	COURSE	T	P	C	
RNUR 381	Maternal and New Born Nursing I	3	-	3	RNUR 382	Maternal and New Born Nursing II	3	-	3	
RNUR 421	Patient/Family-Centered Care Study	1	-	1	RNUR 412	Marketing Strategies and Entrepreneurship for Healthcare	3	-	3	
RNUR 411	Critical Care Nursing /Emergency & Disaster Management	3	-	3	RNUR 462	Family Health Crisis Intervention IV	3	-	3	
RNUR 461	Gynecology	3	-	3	RNUR 352	Sign Language for Healthcare	1	-	1	
RNUR 331	Pediatric Nursing I	3	-	3	RNUR 432	Supply Chain Management	2	-	2	
RNUR 311	Family Health Crisis Intervention III	3	-	3	RNUR 422	Nursing Leadership/ Management	3	-	3	
RNUR 350	Transcultural Nursing	3	-	3	RNUR 332	Pediatric Nursing II	3	-	3	
					RNUR 442	Palliative Care/Gerontology Nursing	3	-	3	
TOTAL		19	12	21	TOTAL		21	-	21	
RNUR 400 Long Vacation Practicum IV(Patient/family-Centered Care Study)					RNUR 300 Long Vacation Practicum III		3	-	3	
					RNUR 492 Senior Research Project II		3	-	3	

**RGN – BSc. NURSING PROGRAM COURSE OFFERING (REGULAR)**  
**TOTAL CREDITS 90 (THEORY – 84/PRACTICUM – 6)**

**YEAR 1**

SEMESTER I					SEMESTER II				
CODE	COURSE	T	P	C	CODE	COURSE	T	P	C
RNUR 201	Principles of Pharmacology I	2	-	2	STAT 202	Statistical Methods for Health Sciences	3	-	3
RNUR 211	Family Health Crisis Intervention I	3	-	3	RNUR 212	Principles of Pharmacology II	2	-	2
RNUR 221	Health Assessment	3	-	3	RELB 163	Life and Teachings of Jesus	3	-	3
BIOL 231	Microbiology & Infection Prevention/Control	3	-	3	RNUR 232	Family Health Crisis Intervention II	3	-	3
MATH 120	General Mathematics	3	-	3	AFST 205	Introduction to African Music	1	-	1
RNUR 251	Pathophysiology	3	-	3	RNUR 250	Transition to Professional Nursing	2	-	2
RNUR 261	Family Health Crisis Intervention I Practicum	-	12	2	RNUR 242	Family Health Crisis Intervention II Practicum	-	12	2
<b>TOTAL CREDITS</b>		<b>17</b>	<b>12</b>	<b>19</b>	<b>TOTAL CREDITS</b>		<b>14</b>	<b>12</b>	<b>16</b>

**YEAR 2 (SUMMER)**

SEMESTER I					SEMESTER II				
CODE	COURSE	T	P	C	CODE	COURSE	T	P	C
RNUR 320	Psychiatric Nursing	4	-	4	EDST 327	General Principles and Methods of Teaching	3	-	3
RNUR 311	Family Health Crisis Intervention III	3	-	3	RNUR 302	Family Health Crisis Intervention IV	3	-	3
RNUR 330	Public Health Nursing	4	-	4	RNUR 322	Nursing Research Methods	3	-	3
RNUR 341	Obstetric Nursing	3	-	3	RNUR 308	Pediatric Nursing	4	-	4
RNUR 461	Gynecology	3	-	3	EDST 217	Principle and Practice of Education	3	-	3
<b>TOTAL</b>		<b>17</b>	<b>-</b>	<b>17</b>	<b>TOTAL</b>		<b>16</b>	<b>-</b>	<b>16</b>

**YEAR 3**

SEMESTER I					SEMESTER II				
CODE	COURSE	T	P	C	CODE	COURSE	T	P	C

RNUR 491	Senior Research Project I	3	-	3		RELS 306	Biblical Foundations of Ethics	3	-	3
RNUR 411	Critical Care Nursing /Emergency & Disaster Management	3	-	3		RNUR 422	Nursing Leadership/ Management	2	6	3
RELB 251	Principles of Christian Faith	3	-	3		RNUR 442	Palliative Care/Gerontology Nursing	3	-	3
RNUR 351	Transcultural Nursing	2	-	2		RNUR 492	Senior Research Project II	3	-	3
RNUR 451	Critical Care Nursing /Emergency & Disaster Management Practicum	-	6	1						
TOTAL		11	6	12		TOTAL		9	6	10

**RGN – BSc. NURSING PROGRAM COURSE OFFERING (SUMMER/SANDWICH)**  
**TOTAL CREDITS 89 (THEORY – 83/PRACTICUM – 6)**

**YEAR 1**

SEMESTER I					SEMESTER II				
CODE	COURSE	T	P	C	CODE	COURSE	T	P	C
RNUR 201	Principles of Pharmacology I	2	-	2	STAT 202	Statistical Methods for Health Sciences	3	-	3
RNUR 211	Family Health Crisis Intervention I	3	-	3	RNUR 212	Principles of Pharmacology II	2	-	2
BIOL 231	Microbiology & Infection Prevention/Control	3	-	3	RNUR 221	Health Assessment	3	-	3
RELB 163	Life and Teachings of Jesus	3	-	3	RNUR 232	Family Health Crisis Intervention II	3	-	3
RNUR 251	Pathophysiology	3	-	3	RNUR 250	Transition to Professional Nursing	2	-	2
<b>TOTAL CREDITS</b>		<b>14</b>	<b>-</b>	<b>14</b>	<b>TOTAL CREDITS</b>		<b>13</b>	<b>-</b>	<b>13</b>
					RNUR 200 Long Vacation Practicum I		-	18	3

**YEAR 2**

SEMESTER I					SEMESTER II				
CODE	COURSE	T	P	C	CODE	COURSE	T	P	C
RNUR 320	Psychiatric Nursing	4	-	4	EDST 327	General Principles and Methods of Teaching	3	-	3
RNUR 311	Family Health Crisis Intervention III	3	-	3	RNUR 302	Family Health Crisis Intervention IV	3	-	3
RNUR 330	Public Health Nursing	4	-	4	RNUR 322	Nursing Research Methods	3	-	3
RELB 251	Principles of Christian Faith	3	-	3	RNUR 308	Pediatric Nursing	4	-	4
RNUR 461	Gynecology	3	-	3	AFST 205	Introduction to African Music	1	-	1
<b>TOTAL</b>		<b>17</b>	<b>-</b>	<b>17</b>	<b>TOTAL</b>		<b>14</b>	<b>-</b>	<b>14</b>
					RNUR 300 Long Vacation Practicum II		-	18	3

**YEAR 3**

SEMESTER I					SEMESTER II				
CODE	COURSE	T	P	C	CODE	COURSE	T	P	C
RNUR 491	Senior Research Project I	3	-	3					

RNUR 411	Critical Care Nursing /Emergency & Disaster Management	3	-	3		RNUR 422	Nursing Leadership/ Management	3	-	3
RELS 306	Biblical Foundations of Ethics	3	-	3		RNUR 442	Palliative Care/ Gerontology Nursing	3	-	3
RNUR 351	Transcultural Nursing	2	-	2		RNUR 492	Senior Research Project II	3	-	3
RNUR 341	Obstetric Nursing	3	-	3		EDST 217	Principle and Practice of Education	3	-	3
TOTAL		14	-	14		TOTAL		11	-	11

**RGN – BSc. NURSING PROGRAM COURSE OFFERING (EVENING)**  
**TOTAL CREDITS 80 (THEORY – 80)**

**YEAR 1**

SEMESTER I					SEMESTER II				
CODE	COURSE	T	P	C	CODE	COURSE	T	P	C
RNUR 211	Family Health Crisis Intervention I	3	-	3	RNUR 221	Health Assessment	3	-	3
RNUR 250	Transition to Professional Nursing	2	-	2	RNUR 351	Transcultural Nursing	2	-	2
BIOL 231	Microbiology & Infection Prevention/Control	3	-	3	RNUR 212	Principles of Pharmacology I	2	-	2
RNUR 241	Pathophysiology	3	-	3	RNUR 232	Family Health Crisis Intervention II	3	-	3
STAT 202	Statistical Methods for Health Sciences	3	-	3	AFST 205	Introduction to African Music	1	-	1
RELB 163	Life and Teachings of Jesus	3	-	3	RNUR 322	Nursing Research Methods	3	-	3
					RNUR 320	Psychiatric Nursing	4	-	4
<b>TOTAL CREDITS</b>		<b>17</b>		<b>17</b>	<b>TOTAL CREDITS</b>		<b>18</b>		<b>18</b>

**YEAR 2**

SEMESTER I					SEMESTER II				
CODE	COURSE	T	P	C	CODE	COURSE	T	P	C
EDST 206	Philosophy of Christian Education	2	-	2	RNUR 302	Family Health Crisis Intervention IV	3	-	3
RNUR 311	Family Health Crisis Intervention III	3	-	3	RNUR 411	Critical Care/Emergency & Disaster Management	3	-	3
RNUR 330	Public Health Nursing	4	-	4	RNUR 308	Pediatric Nursing	4	-	4
RNUR 341	Obstetric Nursing	3	-	3	EDST 217	Principles and Practice of Education	3	-	3
RNUR 461	Gynecology	3	-	3	RNUR 422	Nursing Leadership/Management	2	6	3
RNUR 212	Principles of Pharmacology II	2	-	2	RNUR 492	Senior Research Project II	3	-	3
RNUR 491	Senior Research Project I	3	-	3	RNUR 442	Palliative Care/ Gerontology Nursing	3	-	3
EDST 327	General Principles and Methods of Teaching	3	-	3					
<b>TOTAL</b>		<b>23</b>	-	<b>23</b>	<b>TOTAL</b>		<b>22</b>	-	<b>22</b>



**BACHELOR OF SCIENCE MIDWIFERY PROGRAMME COURSE OFFERING  
(GENERIC PATHWAY)  
TOTAL CREDITS - 167 (THEORY - 134/ PRACTICUM - 33)**

**LEVEL 100**

SEMESTER I					SEMESTER II				
CODE	COURSE	T	P	C	CODE	COURSE	T	P	C
ENGL 111	Language and Writing Skills I	2	-	2	ENGL	Language and Writing Skills II	2	-	2
CHEM 121	Chemistry for Health Sciences	3	-	3	RNUR 102	Foundations of Nursing	3	-	3
MATH 120	General Mathematics	3	-	3	BIOL 112	Anatomy & Physiology II	4	0	4
GNED 125	Study Skills	0	-	0	RNUR 122	Professional Adjustment in Nursing	3	-	3
RNUR 101	Nursing and Midwifery Informatics	2	1	3	RNUR 132	Health Promotion and Environmental health	3	1	4
BIOL 111	Anatomy and Physiology I	3	-	3	SOCI 142	Introductory Sociology	2	-	2
CMME 115	Introduction to Communication Skills	2	-	2	RNUR 152	Foundations of Nursing Practicum	-	2	2
RELB 163	Life and Teachings of Jesus	3	-	3					
<b>TOTAL CREDITS</b>		<b>18</b>	<b>1</b>	<b>19</b>	<b>TOTAL CREDITS</b>		<b>17</b>	<b>3</b>	<b>20</b>
					RNUR 100 Long Vacation Practicum I(General Nursing)		-	3	3

**LEVEL 200**

SEMESTER I					SEMESTER II				
CODE	COURSE	T	P	C	CODE	COURSE	T	P	C
RNUR 211	Family Health Crises Intervention I	3	-	3	STAT 202	Statistical Methods for Health Sciences	3	-	3
RNUR 201	Principles of Pharmacology I	2	-	2	PSYC 222	Human Growth and Development	2	-	2
RELB2 51	Principles of Christian Faith	3	-	3	RMW F202	Physiology and Management of Normal Pregnancy	2	-	2
BIOL2 31	Microbiology & Infection Prevention/Control	3	-	3	RMW F204	Physiology and Management of Normal Labour	2	-	2
PSYC2 41	Introductory Psychology	2	-	2	RMW F206	Physiology and Management of Normal	2	-	2

						Puerperium and Neonate			
RMWF 201	Health Assessment in Midwifery	2	-	2	BIOL2 02	Reproductive Anatomy	3	-	3
AFST2 05	Introduction to African Studies	1	-	1	NUTR 204	Nutrition & Dietetics	2	-	2
RNUR 251	Pathophysiology	3	-	3	RMW F 208	Maternity practicum I	-	2	2
RNUR 261	Family Health Crises Intervention I Practicum	-	2	2					
<b>TOTAL CREDITS</b>		<b>19</b>	<b>2</b>	<b>21</b>	<b>TOTAL CREDITS</b>		<b>18</b>	<b>2</b>	<b>20</b>
RMWF 200 Vacation Practicum II (Midwifery)		-	3	3	RMWF 250 Long Vacation Practicum III (Midwifery)			3	3

### LEVEL 300

SEMESTER I					SEMESTER II				
CODE	COURSE	T	P	C	CODE	COURSE	T	P	C
RMWF 301	Physiology and Management of the High Risk Neonate	3	-	3	RMW F392	Senior Research Project I	3	-	3
RMWF 303	Research Methods in Midwifery	3	-	3	RELS3 06	Biblical Foundation of Ethics	3	-	3
RMWF 305	Professional Ethics in Midwifery	2	-	2	RNUR 352	Sign Language for Health Care	1	-	1
RMWF 307	High Risk Pregnancy	2	-	2	RNUR 330	Public Health Nursing	2	1	3
RMWF 309	Intrapartum complications and Obstetric emergencies	3	-	3	RMW F302	Women's Health	3	-	3
RMWF 311	Abnormal Puerperium	2	-	2	RNUR 302	Mental Health Nursing	3	-	3
RMWF 313	Therapeutic Communication in Midwifery Practice	2	-	2	RMW F304	Maternity practicum III	-	2	2
RMWF 315	Maternity practicum II	-	2	2	RNUR 372	Mental Health Nursing practicum	-	1	1
RNUR 371	Adolescent Health	1	-	1					
<b>TOTAL CREDITS</b>		<b>18</b>	<b>2</b>	<b>20</b>	<b>TOTAL CREDITS</b>		<b>15</b>	<b>4</b>	<b>19</b>
RMWF 300 Vacation Practicum IV (Midwifery)					RMWF 350 Vacation Practicum V (Midwifery)				

### LEVEL 400

SEMESTER I				SEMESTER II			
------------	--	--	--	-------------	--	--	--

CODE	COURSE	T	P	C	CODE	COURSE	T	P	C
RMWF 401	Patient/Family-Centered Maternity Care Study	1	-	1	RMW F404	Family Planning II	3	-	3
RMWF 491	Senior Research Project II	3	-	3	RMW F402	Leadership and Management in midwifery	2	1	3
FREN 400	French for Healthcare	2	-	2	RNUR 432	Supply Chain Management	2	-	2
RMWF 403	Family Planning I	3	-	3	RMW F406	Midwifery entrepreneurship	3	-	3
RELG 451	Bible & Family Dynamics	3	-	3	RMW F408	Contemporary Holistic Midwifery in a Global Context	2	-	2
RMWF 405	Domiciliary Midwifery	2	1	3	RMW F412	Advanced Midwifery	3	-	3
<b>TOTAL CREDITS</b>		<b>14</b>	<b>1</b>	<b>15</b>	<b>TOTAL CREDITS</b>		<b>15</b>	<b>1</b>	<b>16</b>
RMWR 400 Patient//Family-Centered Maternity Care Study Practicum			2	2					

**BACHELOR OF SCIENCE MIDWIFERY PROGRAMME**  
**COURSE OFFERING STATE REGISTERED MIDWIFERY PATHWAY**  
**TOTAL CREDITS 120 (THEORY 102 / PRACTICUM 18)**

<b>YEAR 1</b>									
<b>SEMESTER I</b>					<b>SEMESTER II</b>				
<b>CODE</b>	<b>COURSE</b>	<b>T</b>	<b>P</b>	<b>C</b>	<b>CODE</b>	<b>COURSE</b>	<b>T</b>	<b>P</b>	<b>C</b>
BIOL 111	Anatomy and physiology I	4	-	4	RMW F 202	Physiology and Management of Normal Pregnancy	3	-	3
RNUR 201	Principles of Pharmacology I	2	-	2	RMW F 204	Physiology and Management of Normal Labour	3		3
RELB 251	Principles of Christian Faith	3	-	3	RMW F 206	Physiology and Management of Abnormal Labour & Puerperium	3	-	3
BIOL 231	Microbiology & Infection Prevention / Control	3	-	3	BIOL 112	Anatomy and Physiology II	4	-	4
RMWF 201	Health Assessment in Midwifery	2	-	2	BIOL 202	Reproductive Anatomy	3	-	3
AFST2 05	Introduction to African Music	1	-	1	RNUR 212	Principles of Pharmacology II	2	-	2
RNUR 251	Pathophysiology	3	-	3					
<b>TOTAL CREDITS</b>		<b>18</b>	<b>-</b>	<b>18</b>	<b>TOTAL CREDITS</b>		<b>18</b>		<b>18</b>
<b>RMWF 200 Vacation Practicum II (Midwifery – Observation)</b>			3	3	<b>RMWF 250 Vacation Practicum II (Midwifery)</b>		-	3	3

<b>YEAR 2</b>									
<b>SEMESTER III</b>					<b>SEMESTER IV</b>				
<b>CODE</b>	<b>COURSE</b>				<b>CODE</b>	<b>COURSE</b>	<b>T</b>	<b>P</b>	<b>C</b>
RMWF 301	Transition to Professional Nursing / Midwifery	2	-	2	RMW F 392	Senior Research Project I	3	-	3
RMWF 307	High Risk Pregnancy	2	-	2	RMW F 303	Research Methods in Midwifery	3	-	3
RMWF 309	Intrapartum Complications and Obstetric Emergencies	3	-	3	RELT 385	Introduction to Biblical Foundations of Ethics	3	-	3

RMWF 311	Abnormal Puerperium	2	-	2	RMWF 330	Public Health in Midwifery Context	2	1	3
RMWF 313	Therapeutic Communications in Midwifery Practice	2	-	2	RMWF 302	Women's Health	3	-	3
RNUR 371	Adolescent Health	1	-	1	RNUR 302	Mental Health Nursing	3	-	3
STAT 202	Statistical Methods for Health Sciences	3	-	3	RNUR 372	Mental Health Nursing Practicum	-	1	1
<b>TOTAL CREDITS</b>		<b>15</b>		<b>15</b>	<b>TOTAL CREDITS</b>		<b>17</b>	<b>2</b>	<b>19</b>
<b>RMWF 300 Vacation Practicum III (Midwifery)</b>		-	3	3	<b>RMWF 350 Vacation Practicum IV (Midwifery)</b>		-	3	3

### YEAR 3

SEMESTER V					SEMESTER VI				
CODE	COURSE	T	P	C	CODE	COURSE	T	P	C
RMWF 305	Professional Ethics in Midwifery	2	-	2	RNUR 450	Sign Language for Health Care	1		1
RMWF 401	Patient / Family – Centred Maternity Care Study	1	-	1	RMWF 404	Family Planning II	3	-	3
RMWF 491	Senior Research Project II	3	-	3	RMWF 402	Leadership and Management in Midwifery	2	1	3
RMWF 403	Family Planning	3	-	3	RNUR 432	Supply Chain Management	2	-	2
RELG 451	Bible and Family Dynamics	3	-	3	RMWF 406	Midwifery Entrepreneurship	3	-	3
RMWF 405	Domiciliary Midwifery	2	1	3	RMWF 408	Contemporary Holistic Midwifery in a Global Context	2	-	2
					RMWF 412	Advanced Midwifery	3	-	3
<b>TOTAL CREDITS</b>		<b>14</b>	<b>1</b>	<b>15</b>	<b>TOTAL CREDITS</b>		<b>16</b>	<b>1</b>	<b>17</b>
<b>RMWF 400 Patient / Family – Centred Maternity Care Study Practicum</b>			2	2					

**BACHELOR OF SCIENCE MIDWIFERY PROGRAMME**  
**COURSE OFFERING REGISTERED MIDWIFERY PATHWAY**  
**TOTAL CREDITS 80 (THEORY 70/ PRACTICUM 10)**

**YEAR 1**

SEMESTER I					SEMESTER II				
CODE	COURSE	T	P	C	CODE	COURSE	T	P	C
RMWF 301	Transition to Professional Nursing / Midwifery	2	-	2	RMW F 307	High Risk Pregnancy	2		2
STAT 202	Statistical Methods for Health sciences	3	-	3	RMW F 392	Senior Research Project I	3		3
AFST 205	Introduction to African Music	1	-	1	RMW F 303	Research Methods	3		3
RNUR 201	Principles of Pharmacology I	2	-	2	BIOL 202	Reproductive Anatomy	3		3
RELB 251	Principles of Christian Faith	3	-	3	RNUR 212	Principles of Pharmacology II	2		2
BIOL 231	Microbiology & Infection Prevention / Control	3	-	3	RNUR 371	Adolescent Health	1		1
RMWF 309	Intrapartum Complications and Obstetric Emergencies	3	-	3	RNUR 251	Pathophysiology	3		3
RMWF 201	Health Assessment in Midwifery	2	-	2					
<b>TOTAL CREDITS</b>		<b>19</b>	<b>-</b>	<b>19</b>	<b>TOTAL CREDITS</b>		<b>17</b>		<b>17</b>
<b>RMWF 300 Vacation Practicum III (Midwifery)</b>			3	3	<b>RMWF 350 Vacation Practicum IV (Midwifery)</b>			3	3

**YEAR 2**

SEMESTER III					SEMESTER IV				
CODE	COURSE	T	P	C	CODE	COURSE	T	P	C
RMWF 305	Professional Ethics in Midwifery	2	-	2	RMW F 402	Leadership and Management in Midwifery	2	1	3
RMWF 491	Senior Research Project II	3	-	3	RMW F 408	Contemporary Holistic Midwifery in a Global Context	2	-	2
RMWF 403	Family Planning	3	-	3	RMW F 406	Midwifery Entrepreneurship	3	-	3
RELG 451	Bible and Family Dynamics	3	-	3	RMW F 412	Advanced Midwifery	3	-	3

RMWF 405	Domiciliary Midwifery	2	1	3		RNUR 432	Supply Chain Management	2	-	2	
RMWF 204	Physiology and Management of normal Labour	3	-	3		RNUR 450	Sign Language for Health Care	1		1	
RMWF 206	Physiology and Management of Abnormal Labour & Puerperium	3	-	3							
RMWF 401	Patient / Family – Centred Maternity Care Study	1	-	1							
TOTAL CREDITS		19	1	20		TOTAL CREDITS		13	1	14	
RMWF 400 Patient/Family-Centered Maternity Care Study Practicum (Midwifery)			2	2							

BACHELOR OF SCIENCE MENTAL HEALTH/PSYCHIATRIC NURSING COURSE OFFERING (GENERIC PATHWAY) TOTAL CREDITS - 177 (THEORY - 143/ PRACTICUM - 34)									
LEVEL 100									
SEMESTER I					SEMESTER II				
CODE	COURSE	T	P	C	CODE	COURSE	T	P	C
ENGL 111	Language and writing skills I	2	-	2	ENGL 112	Language and writing skills II	2	-	2
CHEM 121	Chemistry for Health Sciences	3	-	3	RNUR 102	Foundations of Nursing	2	6	3
MATH 120	General Mathematics	3	-	3	BIOL 112	Anatomy and Physiology II	4	-	4
GNED 125	Study Skills	0	-	0	RNUR 122	Professional Adjustment in Nursing	3	-	3
RNUR 101	Nursing and Midwifery Informatics	2	6	3	RMHN 122	Health Promotion and Environmental Health in Psychiatric Nursing	3	6	4
BIOL 111	Anatomy and Physiology I	4	-	4	SOCI 142	Introductory Sociology	2	-	2
CMME 115	Introduction to Communication Skills	2	-	2	RMHN 132	First Aid, Emergency and Disaster Management	2	6	3
RELB 163	Life and Teachings of Jesus	3	-	3					
TOTAL CREDITS		19	6	20	TOTAL CREDITS		18	18	21
RMHN 155 Vacation Practicum I (General Nursing)			18	3	RMHN 156 Vacation Practicum II (General Nursing)		-	18	3
LEVEL 200									
SEMESTER I					SEMESTER II				
CODE	COURSE	T	P	C	CODE	COURSE	T	P	C
RMHN 201	Principles and Practice of Mental Health Nursing I	2	6	3	RMHN 212	Psychopathology II	3	-	3
RMHN 211	Psychiatric Assessment and Therapies	2	-	2	RMHN 222	Principles and Practice of Mental Health Nursing II	2	6	3
RMHN 221	Psychopathology I	3	-	3	PSYC 222	Human Growth and Development	2	-	2
RELB	Principles of Christian Faith	3	-	3	PSYC	Introductory Social	2	-	2



251					252	Psychology			
BIOL 231	Microbiology & Infection Prevention/Control	3	-	3	PEAC 100	Physical activity	0	-	0
PSYC 241	Introductory Psychology	2	-	2	RMHN 232	Psychopharmacology	4	-	4
RNUR 251	Pathophysiology I	3	-	3	NUTR 204	Nutrition & Dietetics	2	-	2
AFST 205	Introduction to African Music	1	-	1	RNUR 252	Pathophysiology II	2	-	2
					STAT 200	Statistical Methods for Health Sciences	3	-	3
<b>TOTAL CREDITS</b>		<b>19</b>	<b>6</b>	<b>20</b>	<b>TOTAL CREDITS</b>		<b>20</b>	<b>6</b>	<b>21</b>
RMHN 255 Vacation Practicum III (Mental Health)		-	18	3	RMHN 256 Long Vacation Practicum IV (Mental Health)			18	3

### LEVEL 300

SEMESTER I					SEMESTER II				
CODE	COURSE	T	P	C	CODE	COURSE	T	P	C
RNUR 301	Nursing Research Methods	3	-	3	RNUR 322	Senior Research Project I	3	-	3
RNUR 351	Transcultural Nursing	2	6	3	RELS 306	Introduction to Biblical Foundation of Ethics	3	-	3
RNUR 321	Community Health Nursing I	3	-	3	RNUR 352	Sign Language for Healthcare	1	-	1
RMHN 371	Child and Adolescent Mental Health Nursing	3	-	3	RNUR 342	Community Health Nursing II	3	6	4
RMHN 301	Mental Health Nursing Theories	3	-	3	RMHN 362	Medical/Surgical Nursing	3	6	4
RMHN 361	Obstetric Nursing	2	6	3					
RMHN 341	Advanced Nursing	2	6	3					
<b>TOTAL CREDITS</b>		<b>18</b>	<b>18</b>	<b>21</b>	<b>TOTAL CREDITS</b>		<b>13</b>	<b>12</b>	<b>15</b>
RMHN 355 Vacation Practicum V (Mental Health)					RMHN 356 Vacation Practicum VI (Mental Health)			18	3

### LEVEL 400

SEMESTER I				SEMESTER II			
------------	--	--	--	-------------	--	--	--

CODE	COURSE	T	P	C	CODE	COURSE	T	P	C
RNUR 421	Patient//Family-Centered Care Study	1	-	1	RNUR 412	Marketing Strategies and Entrepreneurship for Healthcare	3	-	3
RNUR 431	Senior Project II	3	-	3	RNUR 422	Nursing Leadership/Management	2	6	3
FREN 400	French for Healthcare	2	-	2	RNUR 432	Supply Chain Management	2	-	2
RMHN 441	Substance Misuse, Toxicology and Rehabilitation I	2	-	2	RNUR 442	Palliative Care/Gerontology Nursing	3	-	3
RMHN 451	Stress and Stress Management	3	-	3	RMHN 442	Substance Misuse, Toxicology and Rehabilitation II	2	-	2
RMHN 461	Community-Based Rehabilitation	1	6	2	RMHN 462	Forensic and Mental Health Nursing	3	-	3
RMHN 471	Therapy Intervention for Trauma Abuse and Violence	2	-	2	RMHN 452	Psychology of Personality	2	-	2
RELG 451	Bible & Family Dynamics	3	-	3					
RMHN 481	Introduction to Theories and Systems of Psychotherapy and Counseling	2	6	3					
TOTAL CREDITS		19	12	21	TOTAL CREDITS		17	6	18
RMHN 410 Patient//Family-Centered Care Study Practicum			12	2					

BACHELOR OF SCIENCE MENTAL HEALTH/PSYCHIATRIC NURSING COURSE OFFERING (RMN – BSc. MENTAL HEALTH PATHWAY) TOTAL CREDITS - 87 (THEORY - 80/ PRACTICUM - 7)									
YEAR 1									
SEMESTER I					SEMESTER II				
CODE	COURSE	T	P	C	CODE	COURSE	T	P	C
RNUR 353	Advanced Professional Nursing	2	-	2	RNUR 252	Pathophysiology II	2	-	2
RMHN 371	Child and Adolescent Mental Health Nursing	3	-	3	RMH N 372	Psychopathology	3	-	3
RMHN 301	Mental Health Nursing Theories	3	-	3	RMH N382	Principles and Practice of Mental Health Nursing	3	-	3
AFST 205	Introduction to African Music	1	-	1	RNUR 332	Public Health Nursing	4	-	4
STAT 200	Statistical Methods for Health Sciences	3	-	3	RMH N 232	Psychopharmacology	4	-	4
RNUR 251	Pathophysiology I	2	-	2	RNUR 322	Nursing Research Methods	3	-	3
RNUR 351	Transcultural Nursing	2	6	3	EDST 216	General Principles and Methods of Teaching	3	-	3
RELB 251	Principles of Christian Faith	3	-	3					
TOTAL CREDITS		19	6	20	TOTAL CREDITS		22	-	22
RMHN 310 Vacation Practicum V (Mental Health)			18	3	RMHN 320 Vacation Practicum VI (Mental Health)			18	3
YEAR 2									
SEMESTER III					SEMESTER IV				
CODE	COURSE	T	P	C	CODE	COURSE	T	P	C
RNUR 491	Senior Research Project I	3	-	3	RNUR 422	Nursing Leadership/Managem ent	3	-	3
RMHN 441	Substance Misuse, Toxicology and Rehabilitation I	2	-	2	RNUR 442	Palliative Care/Gerontology Nursing	3	-	3
RMHN 451	Stress and Stress Management	3	-	3	RMH N	Substance Misuse, Toxicology and Rehabilitation II	2	-	2

						442				
RMHN 461	Community-Based Rehabilitation	2	-	2		RMH N 452	Psychology of Personality	2	-	2
RMHN 471	Therapy Intervention for Trauma Abuse and Violence	2	-	2		RELS 306	Introduction to Biblical Foundation of Ethics	3	-	3
RMHN 481	Introduction to Theories and Systems of Psychotherapy and Counseling	3	-	3		RMH N 462	Forensic and Mental Health Nursing	3	-	3
RMHN 361	Obstetric Nursing	3	-	3		RNUR 492	Senior Project II	3	-	3
EDST 217	Principle and Practice of Education	3		3						
TOTAL CREDITS		21	-	21		TOTAL CREDITS		19	-	19

***NB: NURSING COURSES MUST BE TAKEN IN THEIR REQUIRED SEQUENCE AS SPECIFIED IN THE ABOVE CURRICULA.***

## **POLICIES REGARDING ACADEMIC ACHIEVEMENT & SUMMER COURSE REGISTRATION AUTHORIZATION**

### **Grading System**

<b>A = 80 – 100</b>	<b>C+ = 56 – 60</b>
<b>A- = 75 – 79</b>	<b>C = 50 – 55</b>
<b>B+ = 70 – 74</b>	<b>C- = 45 – 49</b>
<b>B = 65– 69</b>	<b>D = 40 – 44</b>
<b>B- = 61 –64</b>	<b>F = 00 – 39</b>

- Pre-licensure BScN (Generic) students are NOT allowed to take clinical courses during the Summer/Sandwich program.
- Pre-licensure BScN (Generic) students are permitted to register for 6 credit hours non-clinical courses per session during the Summer/Sandwich program.
- Pre-licensure BScN (Generic) students must NOT register for courses that are published in the RGN-BScN curriculum. These courses include Psychiatric Nursing, Public Health Nursing, Obstetric Nursing, and Gynecology.
- RGN-BScN students in the regular day program will be able to take courses during the Summer/Sandwich program with the permission and advisement of HOD.

- Graded weighted scale for the Demonstration Skills Laboratory Training and Practical Learning Experience at respective clinical sites is calculated at the end of the semester at 30% and 70% respectively.

## **ACADEMIC ADVISEMENT**

Academic advisement is available to all students. During freshmen orientation each student is assigned an individual faculty advisor who will assist them with course selection, course sequencing, and assisting them to maintain the necessary level of performance in each course. All students must meet with their academic advisor to select course at the beginning of each semester. Students must not register for courses without the approval of their academic advisor or HOD. Prior to meeting an academic advisor, the student must bring his/her scholastic report (level 200-400) to ensure that courses are taken sequentially. Students must not progress in a program unless all previous semester courses satisfied the curriculum as outlined in Nursing and Midwifery Student Handbook. Trailed nursing courses must be repeated at the next available offering. A clinical course may be repeated only twice (taken a total of three times). Students will be advised to consider another field of study if a nursing course is repeated three times.

## **ACADEMIC PROBATION**

Any student whose cumulative Grade Point Average (GPA) falls below 2.0 at the end of the semester is placed on academic probation and his/her load will be limited to 12 credits. Such students will be required to enroll in the School of Nursing and Midwifery Tutoring/Academic Remedial Program (this includes Study skills, test taking skills, time management skills and organizational skills). Upon successful completion of the Tutorial Program student must provide a letter to the Head of Department describing strategies he/she will use to be successful in the nursing program. If the student's cumulative GPA is still below 2.0 after the probationary period, then "Communicating the Consequences of Failing Grades" rules will be applied (*See Valley View University Academic Bulletin 2013 – 2018 p.58*).

## **WITHDRAWAL FROM NURSING/MIDWIFERY COURSES**

Withdrawal from a course is permitted only once during the entire program and must be requested prior to the mid-point of a semester. The decision to allow the student to return will be determined by the Head of Department and based on space availability. A student planning to return after withdrawal from the course must submit a written request to the Head of Department.

## **WITHDRAWAL FROM THE SCHOOL**

A student who wishes to withdraw from the nursing program must submit an official letter of withdrawal to the appropriate Head of Department. Withdrawal for any reason terminates the student's right to use the facilities of the program. The decision to allow the student to return will be determined by the VVU Academic Board upon the recommendation of the Nursing Academic Affairs Committee and based on space availability.

## **DEFERMENT**

A letter requesting a deferment must be submitted to the Office of the Registrar with copy to the Head of Department's office. The letter must specify the reason for the deferment and the

expected length of time requested (not to exceed one academic year). The student will receive a written response to the request. One month prior to the anticipated return a meeting must be arranged with the student's advisor. If a leave of absence was granted for pregnancy or medical reasons, a medical clearance must be submitted prior to the return to the program.

**POLICIES OF PERSONAL, PROFESSIONAL AND ETHICAL CONDUCT** (*See VVU Academic Bulletin 2013-2018 p.59-62*)

Nursing students will be held accountable for maintaining individual honor in their academic pursuits and are expected to promote a spirit of academic honesty.

Students promote academic honesty neither by participating in cheating (receiving, obtaining or exchanging of information during examinations).

- a. Cheating or collaboration with anyone engaged in cheating (receiving, obtaining or exchanging of information during examinations).
- b. Plagiarism, taking and using the ideas, thoughts, words, writing, graphics or designs of another as one's own, submitting work that has been copied wholly or partly from written or printed sources without proper documentation or permission from the source.
- c. Failure to report medication errors or incidents detrimental to the patients' well-being.
- d. Taking credit for the task performed by another or failure to perform assigned tasks.

In an environment dedicated to promoting academic excellence, acts of academic dishonesty are unacceptable and are subject to disciplinary action, which may include dismissal from the school.

**ABSENCE/TARDINESS TO CLASSES OR/AND PRACTICUM**

Students are required to be present for all scheduled class and clinical sessions.

**Classroom Attendance**

Nursing classes prepare students for safe patient care. Faculty expects students to attend each class to develop the theoretical and practical components of the nursing role. It is the responsibility of the student to notify the instructor prior to an absence or anticipated late arrival.

- One unexcused absence will result in remedial work which will be assigned by the instructor.
- Two unexcused absence will result in a 5% reduction of the mid-semester or final course grade.
- Three unexcused absences will result in course failure.

**Valuables**

Students who bring valuables (phones, tablets, computer, other Hi tech items, large sum of money/cash, jewelry etc.) to the classroom must guard and secure those items as they can be easily stolen or lost. The School is not responsible to replace lost or stolen items.

**Clinical Attendance**

Students are expected to attend all clinical appointments to successfully meet objectives of the course.

- One excused clinical absence must be made-up in the same patient care area within the scheduled time frame at the student's expense (GHS 30 per day).

- A maximum of two excused absences can be made-up in the same patient care area within the scheduled time frame at the student's expense (GHS 30) for each missed clinical day.
- Two unexcused absences will result in clinical failure.

### **Tardiness**

Tardiness can be extremely disruptive to course flow and the learning needs of all.

- Students are required to be ON TIME for ALL classes and clinical experiences.
- Three (3) tardiness equals one (1) unexcused absence; six (6) tardiness is equal to two unexcused absences and will result in the course failure.

It is the instructor's discretion to refuse admission once class has begun. (*See Valley View University Academic Bulletin 2013 – 2018 p. 57*).

## **GRIEVANCE PROCEDURE AND POLICY ON GRADING** (*See VVU Bulletin p.53 - 56.*)

### **CLINICAL INFORMATION**

#### **Student's Responsibility**

In order to satisfactorily accomplish the curriculum objectives of the Bachelor of Science degree, the student must meet the essential eligibility requirements for admission into and progression in the program. The student should be able to perform each activity listed in the Technical Performance Standards with or without reasonable accommodation.

The student should review the Technical Performance Standards document and report to their advisor on any area of deficiency that would affect their expected level of performance (*See Technical Standards Performance p. 25-26*)

**Incident Report** Students in the School of Nursing and Midwifery will follow these procedures in the event of an "incident" while in the clinical or laboratory setting.

An "incident" is defined as any even with possible or real untoward effects involving a student, client, and family member or where there is a real or potential exposure to a communicable disease or blood borne pathogen. (Examples include, needle or sharps sticks, splashes with body fluids, secretions, etc.)

These procedures are to be followed only after emergency treatment is performed as appropriate.

#### **When an incident occurs in an off-campus clinical site:**

- A. The event should be immediately reported to the clinical instructor. The nurse/midwife in charge of the unit should also be immediately notified.
- B. Agency nursing personnel will determine if an official agency incident report is needed.
- C. The student may be requested to complete his/her portion of the incident report, in conjunction with clinical faculty. Student must acknowledge follow-up care required with their signature.
- D. Agency protocol must be followed which may include treatment and required blood work.

- E. If direct blood/body fluid contamination (i.e. cut with contaminated instrument, needle stick, etc.), is involved, the student should immediately contact their personal physician for follow-up care.
- F. Students are required to obtain the follow-up care/testing stated in the agency protocol.
- G. Students are responsible for medical bills incurred as a result of injury or illness.
- H. Copies of all agencies and department incident reports must be forwarded to the Course Manager who will deliver them to the Office of the HOD.

#### **When an incident occurs on campus**

The student will immediately notify the course manager and the Office of the HOD.

The student requiring **emergency treatment** should report to the campus hospital for treatment.

*Student must sign the Incident Report*

#### **Practicum/Clinical Policy**

The School of Nursing and Midwifery, VVU, seeks to develop a mutually beneficial relationship with the clinical facility through a well-integrated student internship program. Practicum is a period of service for a student in a health care setting to gain supervised practical experience. There is significant value to be gained for student and employer in completing an internship.

There are three important requisites for a successful practicum:

- a goal oriented student with a strong work ethic and desire to advance
- a health facility willing to accommodate students
- a School with its committed faculty that support and monitor students' progress and function as a liaison with the clinical facility.

#### **RESPONSIBILITIES OF THE STUDENT NURSE/MIDWIFE**

The student nurse/midwife has the following specific responsibilities:

- a. Know to which clinical facility he/she has been assigned.
- b. Be conscientious, dependable and willing to perform all assigned tasks appropriate to his/her level.
- c. Observe all policies and procedures, follow all rules and regulations and respect the culture and ethos of the organization.
- d. Be willing to travel away from home and establish temporary residence in a geographical location where the facility is located for a specified time period.
- e. Report on time to the facility to receive report and remain on your assigned unit.
- f. Be sure the clinical instructor or nurse/midwife in charge is made aware if you need to leave the unit.
- g. Report and hand over the care of your patient to a responsible nursing/midwifery staff at the end of your tour of duty.
- h. Visiting of colleagues on other units is strictly prohibited.
- i. Mobile phones must be **switched off** while in the clinical area.
- j. Adhere to the School of Nursing and midwifery dress code while in the clinical facility.



- k. Report on time at the designated location for transportation to and from the clinical facility. Students who miss the bus will still be expected to report for clinical at their own expense.

### **ACADEMIC DISHONESTY** (*See VVU Bulletin p.59 - 65*)

Academic dishonesty shall be dealt with according to the policy outlined in the University Bulletin. Cheating in assignments such as duplication in any form will result in nullification of the whole assignment and the student will receive zero credit.

### **UNSAFE PRACTICE**

Unsafe practice is a care activity or lack care that endangers the client/ patient's life. A student who endangers the life of a client/patient will be asked to withdraw from the course and he/she will receive a failing grade. The student will be required to spend time in the campus skills lab to remediate the skill deficit under faculty supervision. If the student continues to be unsafe and fails a second time he/she will be withdrawn from the nursing/midwifery program.

### **UNIFORM/DRESS CODE**

#### **1. Uniform**

At all times students of Valley View University whether in a clinical agency on clinical assignment or in any way representing the School must be in compliance with the standards of dressing established by the University and the School. The clinical faculty has the responsibility to enforce compliance with the dress code and to ensure conformance with these standards. Uniform will consist of white dress for ladies and white shirt with black tie and white trousers for men. Students will be required to wear the School of Nursing and Midwifery uniform including a name tag and black rubber sole (close toed) shoes, with no bow attached, no suede shoes and no sequencing design while in the clinical area. The uniform will be ordered by the respective departments for a fee as detailed in the prospectus.

#### **2. Standard Equipment**

Stethoscope, bandage scissors, breast watch, a nurse's dictionary, hand sanitizer, a black and a red pen.

#### **3. Lab Coat**

Lab coat must be white with school patch on the left shoulder (1") one inch below the shoulder seam.

Lab coats must be at least knee length.

Students will wear appropriate street clothes when on clinical assignment or the designated school activities. Dresses and/or skirts worn under lab coats must be at least knee length. Shorts, jeans and sandals are inappropriate when on any clinical assignment.

#### **4. Department of Nursing/Midwifery Patch**

Must be the one designed by the School of Nursing and Midwifery. Item will be available at the secretary's office.

#### **5. Name ID/Badge**

A Valley View university student picture identification/name pin is to be worn during clinical experience.

## **6. Shoes**

Shoes must be enclosed, with rubber sole, black in color and without heels for comfort and ease of movement.

## **7. Hair**

Hairstyles should be conservative and off the face. Hair must also be secured off the collar. Braids must be held in place with a simple tie or barrette. Large colorful hair bows and barrettes are not permitted.

## **8. Facial Hair**

Facial hair must be shaved (for men)

## **9. Fingernails**

Nails should be short, clean and neatly manicured. No nail polish or artificial nails are to be worn in clinical areas.

## **10. Jewelry**

Limited wearing of jewelry to breast watch, wedding band and/or engagement rings. Earrings and rings in other body areas are not permitted. In some clinical settings the wearing of jewelry may be limited or prohibited.

## **11. Personal Hygiene**

Students are expected to maintain appropriate personal hygiene consistent with health care standards.

**12.** The use of perfume, alcoholic beverages or tobacco is to be avoided when dealing with clients and/or their families.

## **13. Dress Code for Classroom and Skills Acquisition Laboratory (SAL) Activity**

This policy outlines the minimum requirement for professional appearance in the classroom and the SAL

- Dress/skirt hemlines must be at least 4 centimeters below the knees (must not be more than 5 centimeters above the knee when sitting).
- Dresses with modest/non-revealing necklines are appropriate
- Clothing must be non-revealing, not skin tight and properly fitting
- Dresses/skirts with high immodest slits are not allowed
- See-through dresses/skirts and sleeveless or spaghetti-strap tops of any kind are not permitted
- Jeans of any color or jean style pants for male students are not acceptable
- Hair colors must be of natural tones.
- Slippers, or flip-flops are not allowed
- Artificial nails must not be worn; nails must be free of polish
- Makeup must be limited and of natural tones (no visible/flashy colored lipstick or eye shadow)
- Jewelry is limited to wedding rings (earrings must not be worn at any time during any nursing/midwifery activity including transportation on the university vehicles)

A student may be excluded from classroom or SAL activity if the student fails to adhere to the above policy.

## **COUNSELING**

The University operates a counseling unit equipped with both human and material resources to respond to the educational, emotional, psychological, mental and social concerns of all university students. The unit also offers guidance in academic, social, personal and group problems of students. No effort is spared in ensuring that students maintain emotional balance and mental stability necessary for academic work. When necessary, students are referred appropriately for further attention. Beside the counseling unit, the Chaplaincy, the Academic Dean's office, the Director of Admission and Records office, offices of Departmental Heads and the entire faculty are always available to assist students in planning their academic, social and spiritual lives.

## **HEALTH SERVICE**

**Required Medical Records:** All first-time students are required to submit a completed health evaluation form duly signed by a physician before registration can be completed. The medical examination form is included in the application package provided by the Admission and Records office.

**Available Medical Care:** The University operates a hospital on the campus for the benefit of all students and staff. The cost of first aid treatment is included in the fees required of all students. The cost of consulting a physician outside the campus, the purchase of prescribed medicines, and hospitalization are the responsibility of the student.

## **NON-DISCRIMINATORY POLICY**

The School of Nursing and Midwifery follows the policies of Valley View University which recognizes human equality and the rights of all persons to equal opportunity. No student is to be discriminated against on the basis of age, religion, sex, national origin, race or marital status.

## **GENDER POLICY**

Valley View University is part of a network of over a hundred tertiary institutions owned and operated by the Seventh-Day Adventist Church globally. Our raison d'être is founded on the philosophy of the church which aims at using its denominationally owned and operated institutions – publishing houses, health food industry and educational institutions at all levels, to carry the gospel to the world.

Our values include the following:

- We value the Bible as the primary reference for life's direction and qualities.
- We value excellence in all that we do.
- We value ethical and moral conduct at all times and in all relationships.
- We value creativity and innovation in the completion of our mission.
- We value honesty, integrity, and courage as the foundation of all our actions.
- We value the trust placed in us by colleagues and by the world church membership.
- We value people as children of God and therefore brothers and sisters of one family.

It stands to reason that our policies including those on gender are firmly anchored on those espoused by the church. The church's position and thus ours, on gender as it relates to the following key areas are:

## **EQUAL OPPORTUNITY**

As an institution we look at equal opportunity in two main ways

### **a. Equal opportunity as it relates to employment**

VVU as an institution of the Seventh-Day Adventist Church affirms to “follow procedures to ensure equal opportunity of employment, remuneration and advancement on the basis of job qualification and performance.” It also supports a policy of equity, fairness and non-discrimination.” In furtherance of this the church “will not practice or condone discrimination with regard to race, national origin, gender, age, marital status or disability that does not prohibit performance of essential job functions.”

### **b. Equal opportunity as it relates to student enrolment**

This is encapsulated in our admission policy, which says that admission will be granted “without discrimination on the basis of race, color, creed, national or ethnic origin, gender or marital status (p. 22, Academic Bulletin 2013-2018). This policy extends to the treatment of students under all circumstances.

## **SEXUAL HARASSMENT**

VVU has a clear policy on appropriate sexual standards and behaviour. Our sexual standards enjoins all faculty, staff, administrators, trustees and students to maintain in their teaching, influence and examples to uphold Christian sexual standards as held by the Seventh-Day Adventist Church. Valley View University honours an ideal of sexual purity, which transcends mere legal enforcement. Infringement of rules relating to acceptable sexual standards is subject to disciplinary actions up and including termination of employment in the case of employees and expulsion in the case of students.

Sexual harassment in all its various manifestations is particularly seen as reprehensible behavior, one that is not tolerated in VVU. VVU believes that it ‘subverts the mission of the university, and the careers, educational experience, and well-being of students, faculty and employees. Specific examples of behavior considered as harassment have been extensively spelt out in p. 110-112 of the University's Employee Handbook.]

This includes but is not limited to the following

- Direct or implied threats that submission to sexual advances will be a condition of grades, letters of recommendation, employment, or promotion
- Direct propositions of sexual nature
- Subtle pressure for sexual activity
- Unnecessary touching, patting, hugging, or brushing against a person's body
- Remarks of a sexual nature about a person's clothing or body. Etc.

## **CAREER OPPORTUNITIES**

There is currently a brain drain of professional nurses and midwives to other countries where the remuneration is better. Other attractions include better working conditions, more specialty choices and graduate study opportunities conducive to personal and professional growth and development. There is therefore, a great need for the development of more highly skilled

professional nurses and midwives for the provision of a high standard of nursing/midwifery care and management including ambulatory care to meet the health needs of this country. It is therefore important that at this crucial time we prepare nurses and midwives to meet present and future needs.

The need for nurses and midwives is particularly felt in the rural communities of Ghana. Bachelor of Science prepared Christian nurses and midwives from Valley View University will function as change agents by providing leadership and clinical expertise to improve health care outcomes for individuals, families and communities in diverse settings of Ghana and globally.

### **EMPLOYMENT PROSPECTS**

Nursing is an art and a science that enables individuals and families to aim toward health promotion, health maintenance and restoration of health. No other career focuses so completely on the physical, emotional and spiritual needs of other people. Degree graduates will fill positions as clinical nurses/midwives at the bedside and participate in community health. They will also practice as professionals in the areas of school health, private industry, government, non-governmental organizations and clinics. Bachelor Degree graduates will also be qualified to assist in teaching in Diploma level programs and to pursue graduate/post graduate study in nursing/midwifery and other related specialties. Graduates in nursing/midwifery also find increased employment opportunities in research, practice, and education.

Therefore, BSc Nursing/Midwifery Graduates will participate fully in the following:

1. Organizing and delivery of community nursing/midwifery care.
2. Organizing and providing school health care.
3. Organizing and providing industrial health care.
4. Conducting and participating in research.
5. Promoting health (i.e. health education at all levels).
6. Providing reproductive health care including family planning services.
7. Working for Non-Governmental Organizations (NGO).
8. Organizing and operating health assessment clinics for health promotion.
9. Assist in teaching in Diploma Nursing/Midwifery Institutions.
10. Further their education up to the PhD level in any nursing/midwifery specialty and thus be eligible to lecture in nursing/midwifery schools and universities globally.

### **HEALTH INSURANCE REQUIREMENT**

All students of the School must have valid NHIS card in order to access health services anywhere in the country especially during their clinical placements in the designated facilities.

**HEALTH AND VACCINATION REQUIREMENT** As part of admission requirements, students will be required to obtain specific immunizations and tests for their own protection and the protection of patients they will encounter during clinical activities.

## **STUDENTS' ASSOCIATION**

There is also opportunity for all students in the various schools/departments to form associations pertaining to their programs. In this regard, all students are automatically members of their respective departmental association. Elected officers including faculty direct the affairs of the association, conduct general elections and organize meetings according to the approved constitution. All nursing/midwifery students are required to pay association dues at the beginning of each semester prior to registration.

## **CLUBS AND SPORTS**

Literature club, International Students Association, and Student Youth Travel Organization (SYTO), Computer Science Students Association (COSSA), Business Administration Students Association (BASA), National Civic Education Movement, The Green Earth Club, French Club, Ministry Oriented Students Club, Theology /Religion Student Association (THESSA) etc. have been organized to provide for students' interest in these areas. Students also participate in various sporting activities such as table tennis, volley ball, football, basketball and jogging.

**VALLEY VIEW UNIVERSITY  
SCHOOL OF NURSING AND MIDWIFERY**

**Please sign and return as directed**

<b>TECHNICAL PERFORMANCE STANDARDS</b>		<b>YES</b> <b>X</b>	<b>NO</b> <b>X</b>
<b>MUSCULAR AND SKELETAL</b>	Work at areas located at various positions and elevation levels for durations of at least 30 minutes at a time alternating with the need to make frequent changes in body positions		
	Maintain a standing body position for a minimum of two hours, while performing work related functions		
	Transfer and position movement dependent patients from/to various positions and surfaces, such transfer/positioning frequently requiring a minimum of a 23kg. weight bearing load		
	Move/push/pull/reach equipment and accessories of various weights and sizes from one variety of heights to another variety of heights		
	Detect and distinguish between variations in human pulse, muscle spasm & contractions, and/or bony landmarks		
	Safely guide patient in ambulation on level as well as inclined surfaces and stairs, often while the patient is using a variety of assistive devices. In either case, guard patient against falls or other injuries		
	Quickly move from one site to all other areas of the health care facility		
<b>AUDITORY</b>	Detect and appropriately respond to verbally generated directions and acoustically generated monitor signals and vital sign instrumentation output		
<b>VISUAL</b>	Detect and discriminate between various human gestures and non-verbal responses		
	Detect and discriminate between large and small gradations in readings on dials, graphs, and displays, such detection made at various distances from the source		
	Read printed computer screen manuscript text		
	Discern a patient's physical status at distances in excess of 10 feet and in subdued lighting		
	Detect and discriminate between the range of image brightness values present on radiographic and computer screen images		
<b>MANUAL DEXTERITY &amp; FINE MOTOR SKILLS</b>	To manipulate/adjust various types of switches, levers, dials, control, and/or hand-held equipment and/or in various combinations		
	To hold and use a writing instrument for recording patient history or pertinent information		
	Apply gown, gloves, and mask for Universal Precautions		
<b>VERBAL</b>	To articulate clearly to a patient in conversational English or other native/local languages regarding therapeutic goals and procedures		
	Function within environments which may be stressful due to fast pace, need for accuracy, and distracting sights and sounds		

ENVIRONMENT	Recognize that the academic/practicum environment includes exposure to disease, toxic substances, bodily fluids, and/or radiation		
	Exhibit social skills necessary to interact effectively with those of the same or different cultures with respect, politeness, and discretion		
	Maintain cleanliness of personal grooming consistent with close personal contact		
	Function without causing harm to self or others if under the influence of prescription, over the counter medications, or herbal/traditional medications		

### **Technical Performance Standards Informed Consent**

1. I have received, read and understood the Technical Performance Standards of the Valley View University School of Nursing and Midwifery.
2. I understand that the Standards relate to the full array of essential performance competencies inherent to my nursing/midwifery study.
3. I understand that in order to successfully graduate from the nursing/midwifery program, I must be able to satisfactorily perform the tasks listed in the standards.

Student Name (print): \_\_\_\_\_ ID # \_\_\_\_\_

Student Signature: \_\_\_\_\_ Date: \_\_\_\_\_



**VALLEY VIEW UNIVERSITY  
SCHOOL OF NURSING**

**STUDENT AGREEMENT FORM**

I have read and understood the policies outlined in the Nursing/Midwifery Student Handbook 2018-2019. I understand that my failure to abide by these policies will necessitate slowing/stopping progression in the nursing/midwifery program.

Student's Name (Print) \_\_\_\_\_ Student's signature \_\_\_\_\_

Faculty's Name (Print) \_\_\_\_\_ Faculty's signature \_\_\_\_\_

Witness's Name (Print) \_\_\_\_\_ Witness's signature \_\_\_\_\_

Date: \_\_\_\_\_ Program: Bachelor of Science (BSc) in \_\_\_\_\_

**Please sign and date two copies. One copy will be kept on file at Valley View University, School of Nursing and Midwifery; the other copy is for your records.**

**NOTE: Submission of this form is required for eligibility in the Program.**